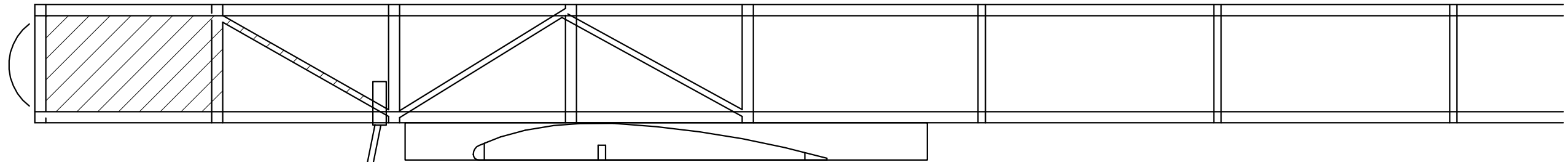


3/32 SQ FRAME, 1/16 X 3/32 UPRIGHTS AND BRACING, LONGERONS ARE 18 INCHES LONG



ADJUST WING TO BALANCE AT CENTER OF GRAVITY
ADJUST FOR ANGLE OF ATTACK AND GLUE IN POSITION

FUSELAGE IS SQUARE

LANDING GEAR HERE

CLOUD TRAMP II

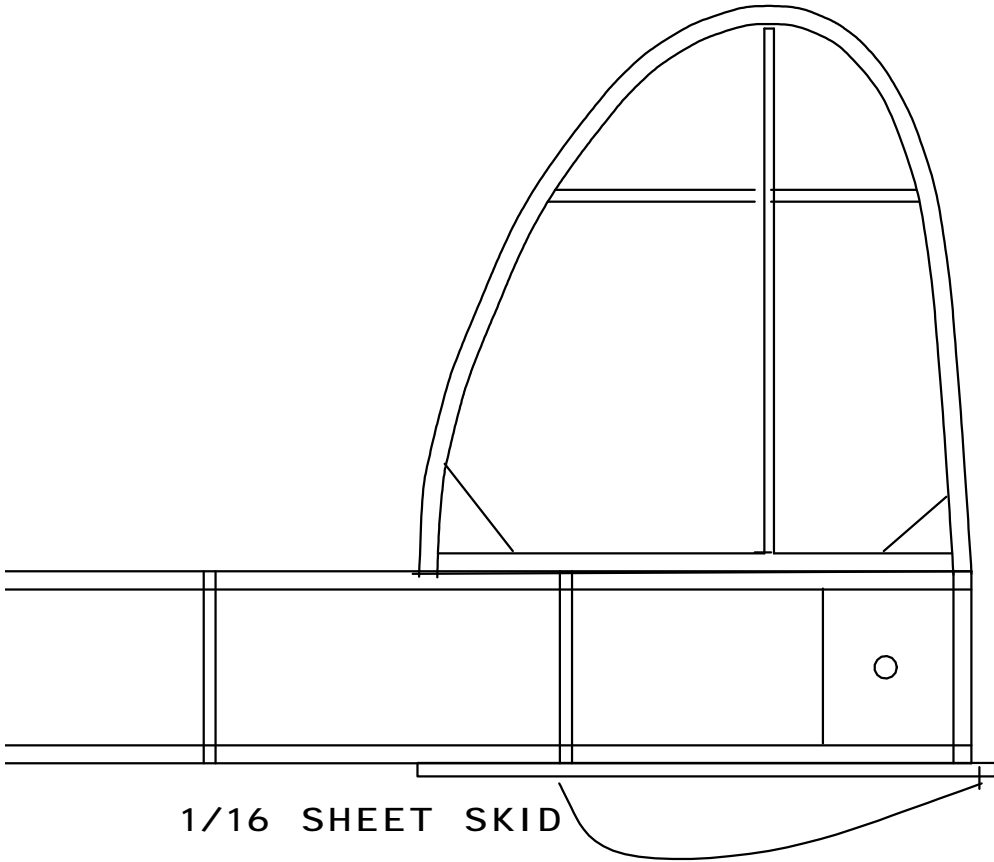
DRAWN BY JIM NORFOLK

DATE:

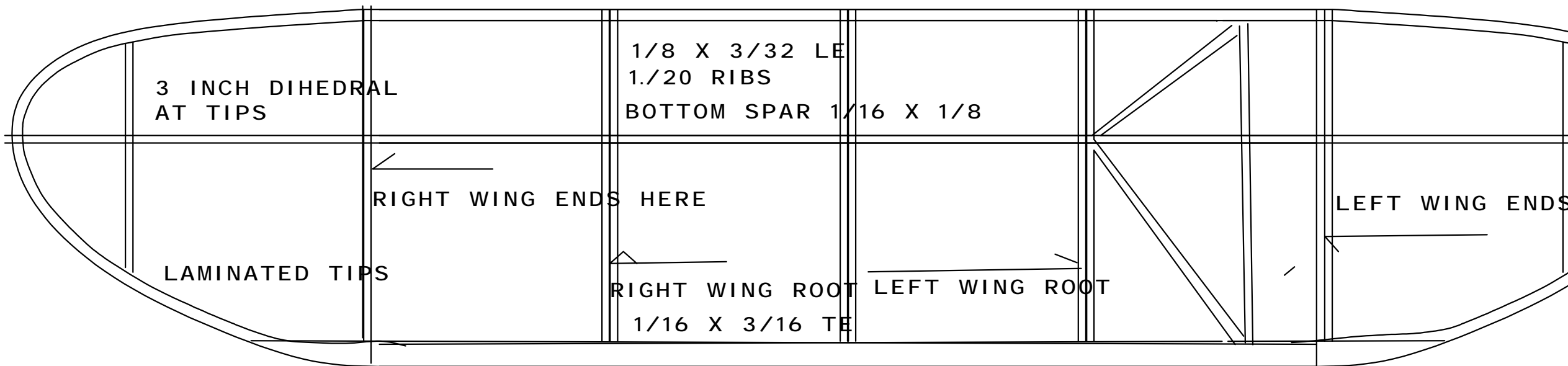
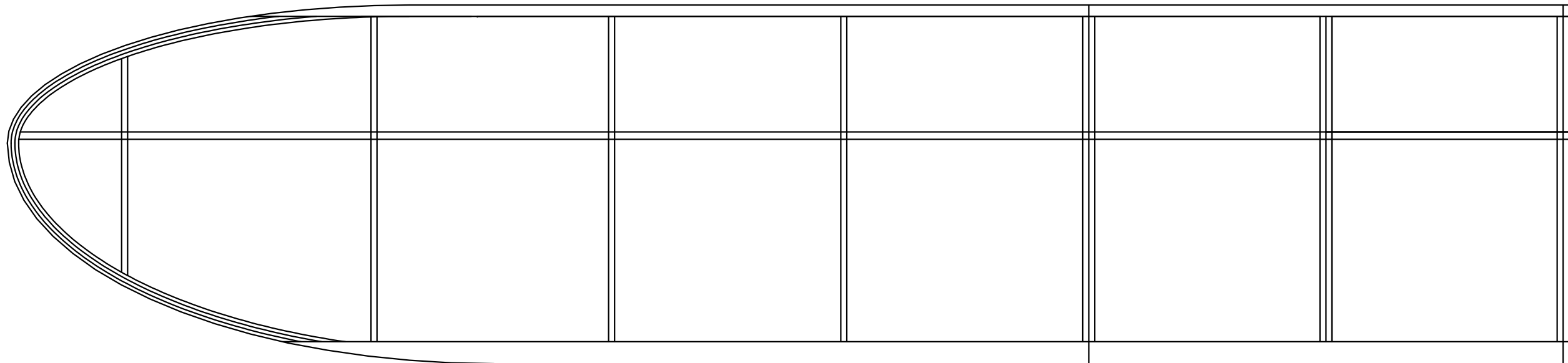
AUG 01

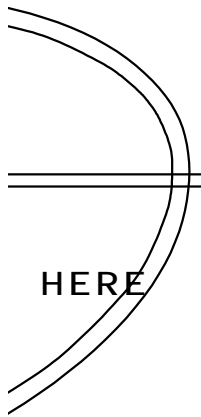
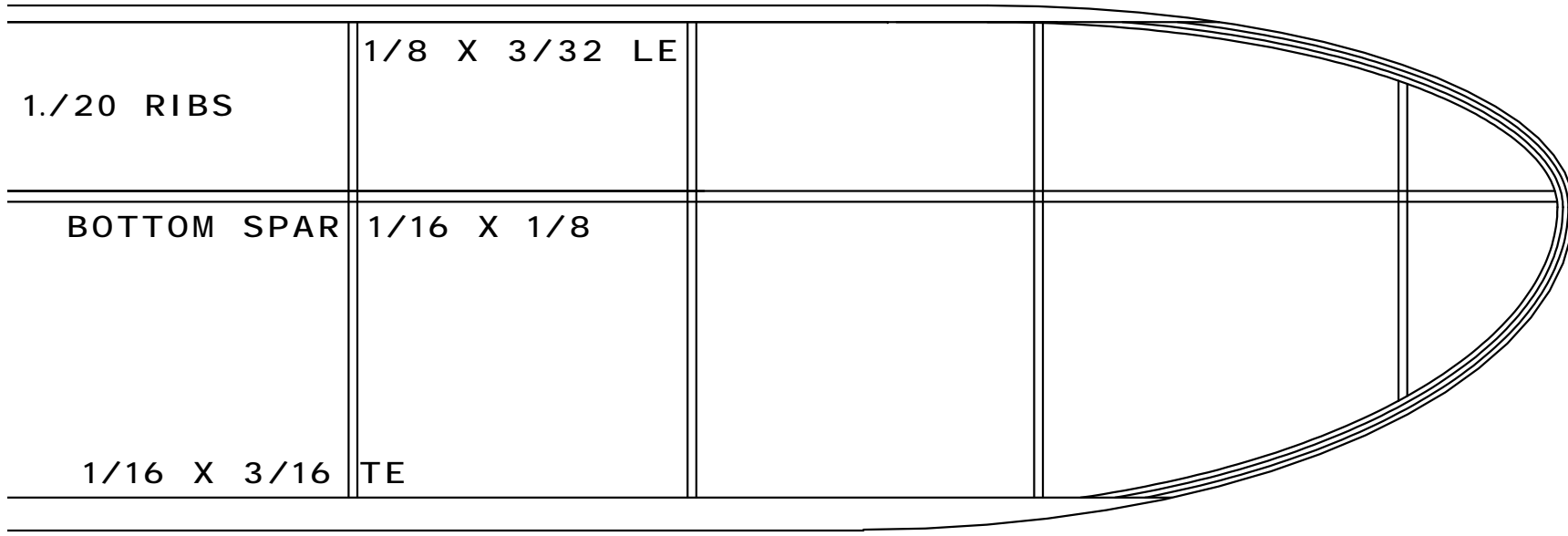
SCALE: FS

SPAN 22 LENGTH 18



MOTOR PEG
1/16 SHEET





Original Cloud Tramp wing section



New built-up wing section